

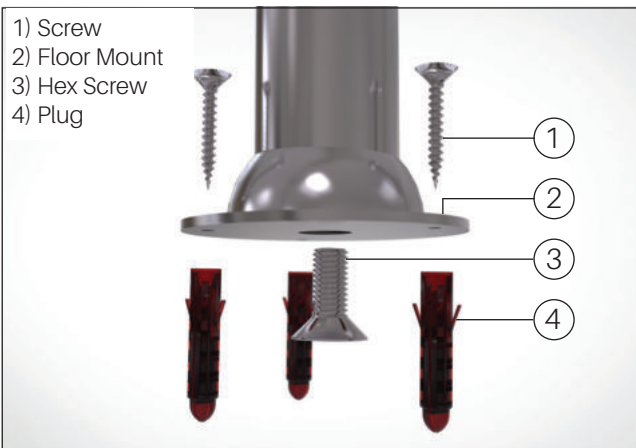
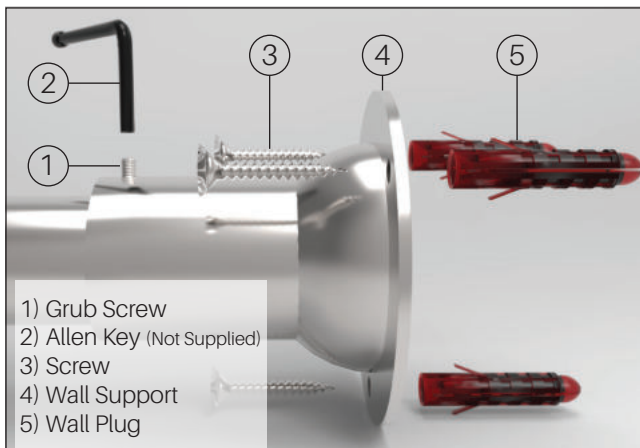
- All the dimensions are shown in millimetres
- Tube dia 32mm x 32mm
- ½ inch BSP bottom opposite end connections
- Test pressure: 10 Bar
- Max working temperature: 8 Bar
- Heat output - in accordance with EN 442

Please Note:

- Please allow minimum of 100mm for valves
- Summer Element use will affect pipe centres
- The flow and return can be reversed

Taurus Columbine	Water Content (L)	Weight (KG)	Pipe Centres +/- 2mm	Fixing Centres (H) +/- 2mm	Fixing Centres (W) +/- 2mm	Height (mm)	Width (mm)
RXTA-0960500	6.64	7	395 minus valves	931	420	960	538
RXTA-0960665	6.95	7.5	530 minus valves	931	600	960	665

Installation:



Step 1: Select the desired mounting position, make sure the wall is adequate to take the fixing points of the rail i.e anchor points must be securely attached to a stud or masonry.

Step 2: Loosely screw the wall support (Part 2) into the wall using the wall screw (5) and washer. Use wall plug (1) if you are fixing into masonry. Do not tighten fully.

Step 3: Manoeuvre the rail back onto the bracket and tighten with the grub screw (3).

Cleaning:

- Do not use any abrasive or chemical cleaners to clean the radiators as this will cause damage to the surface finish. Please use warm water and a damp cloth.
- Do not clean when hot.